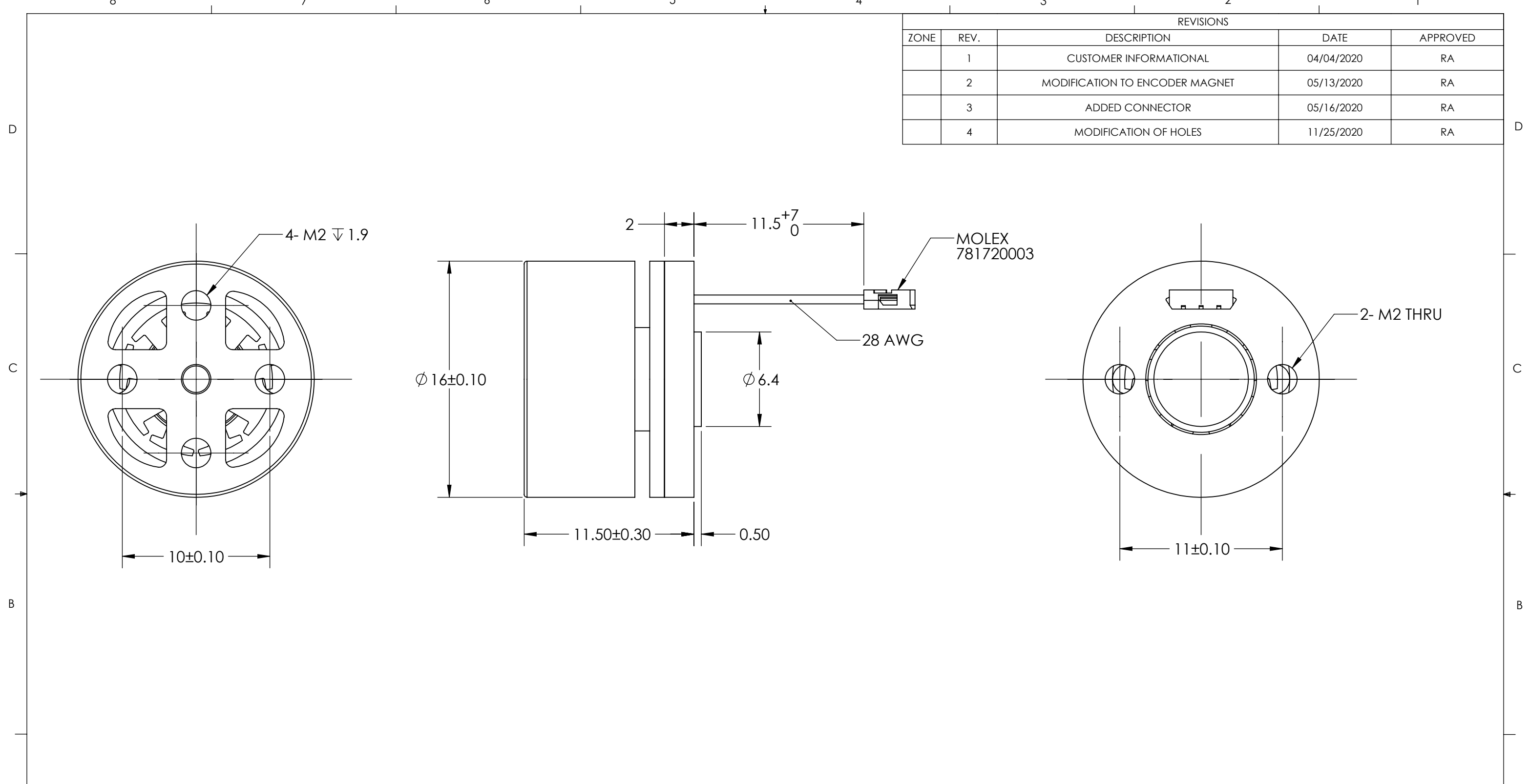


REVISIONS				
ZONE	REV.	DESCRIPTION	DATE	APPROVED
	1	CUSTOMER INFORMATIONAL	04/04/2020	RA
	2	MODIFICATION TO ENCODER MAGNET	05/13/2020	RA
	3	ADDED CONNECTOR	05/16/2020	RA
	4	MODIFICATION OF HOLES	11/25/2020	RA



Parameter	Unit	Value
Nominal Power	W	3.95
Nominal Voltage	V <sub>(DC)</sub>	10.00
Nominal Stall Torque	mNm	5.9
Nominal Speed	rpm	15000.00
Kv: Voltage Constant	rpm/volt	1920 ±10%
Kt: Torque Constant	mNm/A	4.9 ±10%
Maximum efficiency	%	73.70
Operating Environment	-20-85°C; Humidity 95%RH (Free from condensing)	
Insulation	Class B	

THIS DRAWING CONTAINS PROPRIETARY INFORMATION OF THE ORBEX GROUP AND MAY NOT BE IN WHOLE OR IN PART DUPLICATED OR DISCLOSED OR USED FOR MANUFACTURE OF ANY PART DISCLOSED HEREIN WITHOUT WRITTEN PERMISSION OF THE ORBEX GROUP.

**CONFIDENTIAL**

UNLESS OTHERWISE SPECIFIED: DRAWING SYMBOLS & TOLERANCES PER ANSI Y14.5 DIMENSIONS ARE METRIC TOLERANCES: DECIMALS    LINEAR    ANGULAR .X            ±0.2            ±0.5DEG .XX          ±0.02          ±0.2DEG .XXX        ±0.005        ±0.01DEG		
INTERPRET GEOMETRIC TOLERANCING PER: ANSI Y14.5		
MATERIAL	SEE CHART	
FINISH	CLEAN	
DRAWN	Sun KPO	11/25/2020

**Orbex Group**

TITLE:  
**GIMBAL MOTOR**

SIZE	PRT. NO.	REV
<b>B</b>	<b>100150</b>	<b>4</b>

SCALE: 2:1      SHEET 1 OF 1