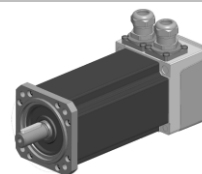


Enquiry N°:

Created by: DB / Checked by: JD

SERVO MOTOR 067LDB306FFCTC

067LDB306FFCTC



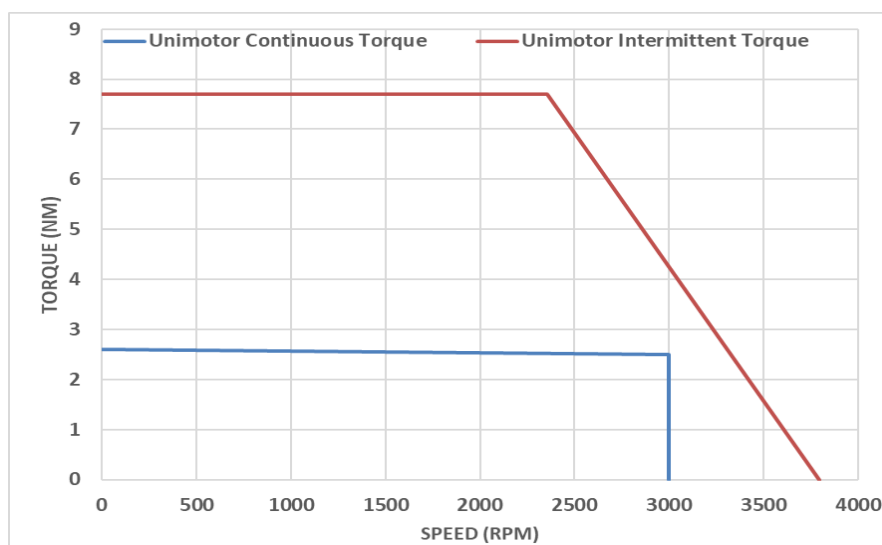
Definition

Type	Unimotor HD	
Frame Size (mm)	067	
Voltage	L	48V DC
Magnet type	D	High dynamic
Frame Length	B	
Speed (min-1)	30	3000
Brake	6	Braked
Connection type	F	Flying leads 0.5m Power cut ends, Signal 16-way Molex connector
Output shaft	F	Half key and full key supplied in bag
Feedback device code	CT	4096 ppr incremental encoder (TDK)
Inertia & thermistor	C	Standard inertia + KTY84-130 thermistor
PCD	075	75.0 (Ø60.0 spigot)
Shaft Diameter	140	14j6 x 30.0
Fan Box	-	
Insulation class	F	
UL Motor / UL Stator	UL Stator	

Nominal characteristics

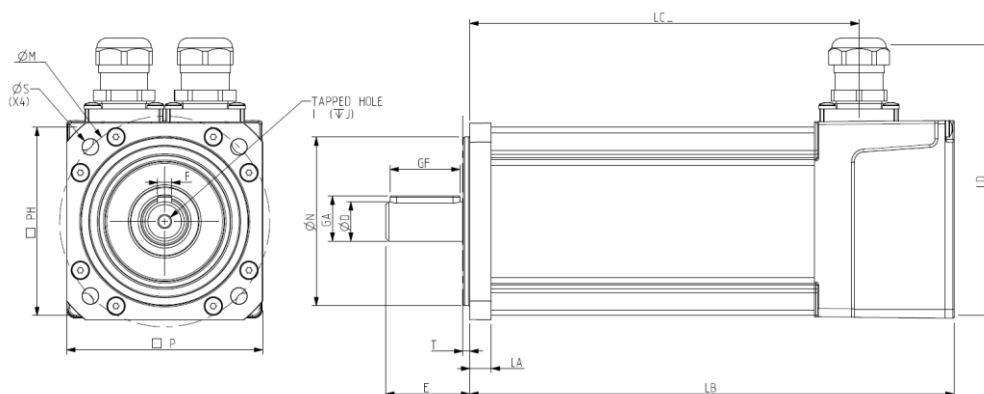
Motor Ambient Temperature (°C)	40	Drive Fsw (kHz)	12
Motor Stall Torque (Nm)	2.55	Stall Current (A)	18.21
Rated Torque (Nm)	2.45	Nominal Current (A)	17.5
Motor Peak Torque (Nm)	7.65	Kt (Nm/A)	0.14
Rated Power (kW)	0.8	Ke (V/kmin-1)	8.5
Winding Thermal Time Constant (s)	61	R (ph-ph) (Ohm)	0.10
Number of Poles	10	L (ph-ph) (mH)	0.3
Typical Cogging (Nm)	0.04		
Inertia (kg.cm²)	0.59	Weight (kg)	3.3
Ingress Protection Level (IP)	IP54		
Brake	Type 6	Static Torque (N.m)	4.0
Release Time (ms)	65	Backlash (°)	3
Brake Supply Voltage (V)	24	Brake Coil Power (W)	15

Torque / speed graph



SERVO MOTOR 067LDB306FFCTC

Motors (° & mm)



LB	Total length	207.9
LC	Gland position	174.0
LA	Flange thickness	7.7
T	Register Length	2.5
N	Register Diameter	60.0
LD	Overall height	~111.5
	Cable length	500.0
P	Flange Square	70.0
S	Fixing Hole Diameter	5.8
M	Fixing hole PCD	75.0
PH	Motor Housing Width	67.0
D	Shaft Diameter	14j6
E	Shaft Length	30.0
GA	Key Height	16.0
GF	Key Length	25.0
G	Key to Shaft End	1.5
F	Key Width	5.0
I	Tapped Hole Thread Size	M5x0.8
J	Tapped Hole Depth	13.5
	Mounting Bolt	M5

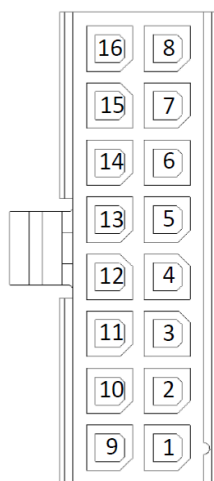
Motor electrical interface

Feedback device code: CT - 4096 ppr Incremental encoder (TDK),
43025-1600 Molex 16-way female signal connector (0.5m lead)

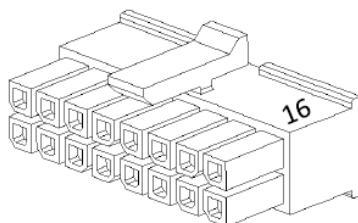
Connection type: Flying leads 0.5m Power cut ends, Signal
16-way Molex connector

SIGNAL FUNCTION	PIN END B
Thermistor	1
Thermistor	2
CH S1	3
CH S2	4
CH S3	5
CH A	6
CH B	7
CH Z	8
GND	9
VCC	10
CH S1-	11
CH S2-	12
CH S3-	13
CH A-	14
CH B-	15
CH Z-	16

PIN DETAIL



16 - WAY CONNECTOR



**Cable 4 + 2 core orange PUR screened
500mm from gland to cable cut end
4 x 2.5mm² wires 300/500V
2 x 0.5mm² wires (brake)
Cable O/D 12.5mm**

Orange (1)	U
Red (2)	V
Yellow (3)	W
Green/Yellow	Earth
Black	Brake
White	Brake

Enquiry N°:

Created by: DB / Checked by: JD

SERVO MOTOR 067LDB306FFCTC

CT Encoder

Manufacturer:	CTD / Motion TDK
Model:	Magnetic
Signal periods:	4096
Output interface:	Differential
Supply voltage:	5V +/- 10%
Accuracy	±1.1 Deg